

# Participation & Representation in the Digital Age (PRD)

Jennifer Oser | Ben-Gurion University, Israel



Ben-Gurion University of the Negev  
Rector's Lecture Series  
November 26, 2024

# Topics

*First and foremost: Note of appreciation!* 🎉

1. ERC project overview, including select papers
2. Present 1 work-in-progress
3. Invitations to upcoming ERC project events

## **#1: ERC project overview, including select papers**

# ERC Project Website

<https://www.prd-erc.eu/>

[Home](#) [Team](#) [Publications](#) [News](#) [Webinars](#) [Contact](#)



Welcome to PRD, a project that researches changing patterns of political participation and democratic representation. At a challenging time for democracies worldwide, PRD aims to contribute new knowledge to strengthen the connection between participation and representation.

Project  
summary  
document

## Introducing PRD

PRD - **P**articipation and **R**epresentation in the **D**igital Age is a European Research Council (ERC) Starting Grant Project. Our project researches the ways in which people engage in both electoral and



# Slides for today

<https://www.pr-d-erc.eu/news>

[Home](#) [Team](#) [Publications](#) [News](#) [Webinars](#) [Contact](#)



## News

### Lecture

November 26, 2024



בית דקל  
חשיפה לעשייה המחקרית באוניברסיטת בן-גוריון בנגב

**Slides** for Jenny's talk on the ERC project in the "Rector's Lecture Series" at Ben-Gurion University. This series is designed for academics from all departments in the university to share the fruits of their research and ideas.

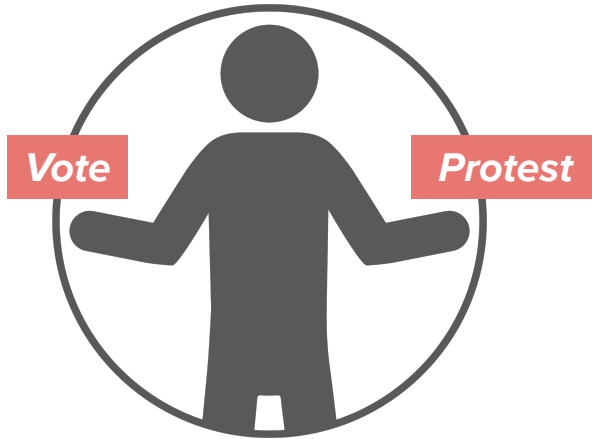
# ERC project motivating puzzle:

Trends in Political Participation and Representation in the Digital Age



# ERC Project's Theoretical Framework

## Repertoires of participation



Including digital behavior

## Subjective representation



## Mobilizing & organizing



Focus: Lower status groups

## New Integration of Hypotheses

**H1:**  
Communication



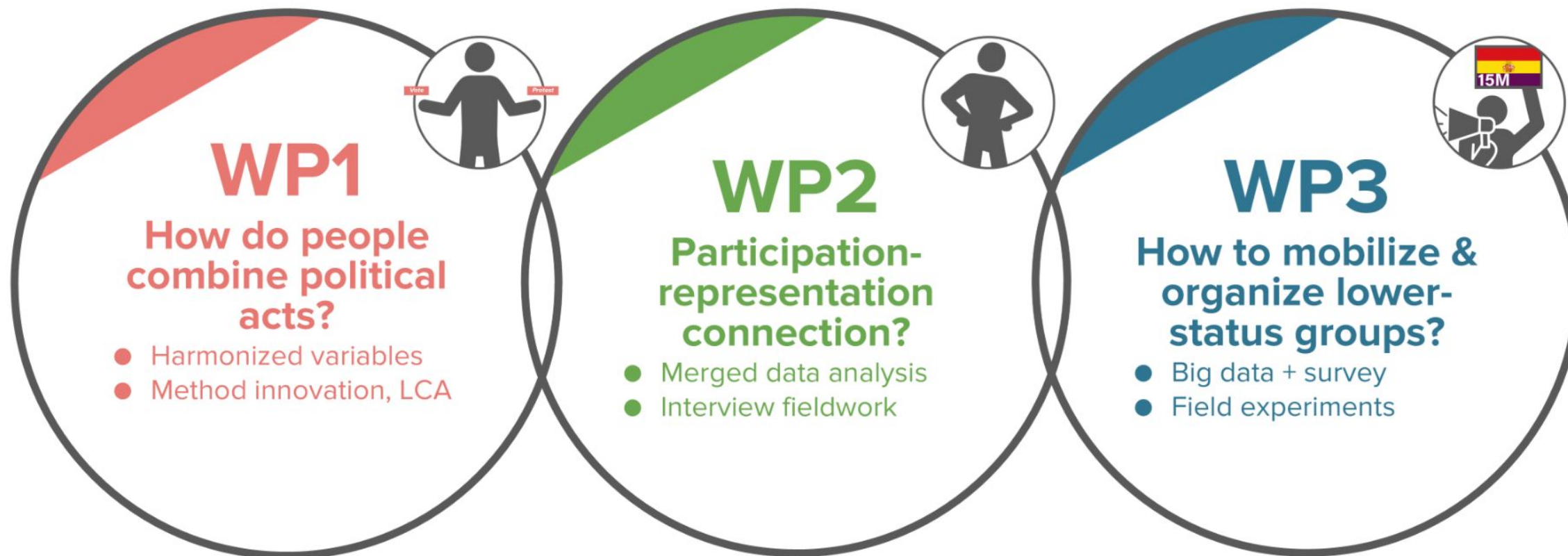
versus

**H2:**  
Grievance





# Research Design



## Contributions

**Data:** Originally harmonized dataset

**Methods:** Innovations in analyzing repertoires

**Theory and findings:** Participation-representation connection



# **How to Recruit a Research Team?**

**Raya Even David**  
**Administrative Manager of PRD**  
**Ben-Gurion University, Israel**



**Dr. Jesper Lindqvist**  
**Postdoctoral Researcher**  
**University of Gothenburg, Sweden**



**Dr. Aya Shoshan**  
**Postdoctoral Researcher**  
**Ben-Gurion University, Israel**



## **PRD's Core Team**

**Francisca Castro**  
**Postdoctoral Researcher**  
**Humboldt University of Berlin & ISDC**



**Johan Lyrvall**  
**PhD Student**  
**University of Catania, Italy**



**Barak Zur**  
**PhD Student**  
**Tel Aviv University, Israel**



# PRD's Extended Team

Collaborators on Planning the Project's Work Packages



**Dr. Zsuzsa Bakk**

Leiden University,  
Netherlands  
Latent Class Analysis



**Dr. Roberto Di Mari**

University of Catania,  
Italy  
Latent Class Analysis



**Dr. Nir Grinberg**

Ben-Gurion University,  
Israel  
Big Data, Experiments



**Prof. Hahrie Han**

Johns Hopkins University,  
United States  
Political Organizing

**Project's International Expert Network**

<https://www.prd-erc.eu/team>

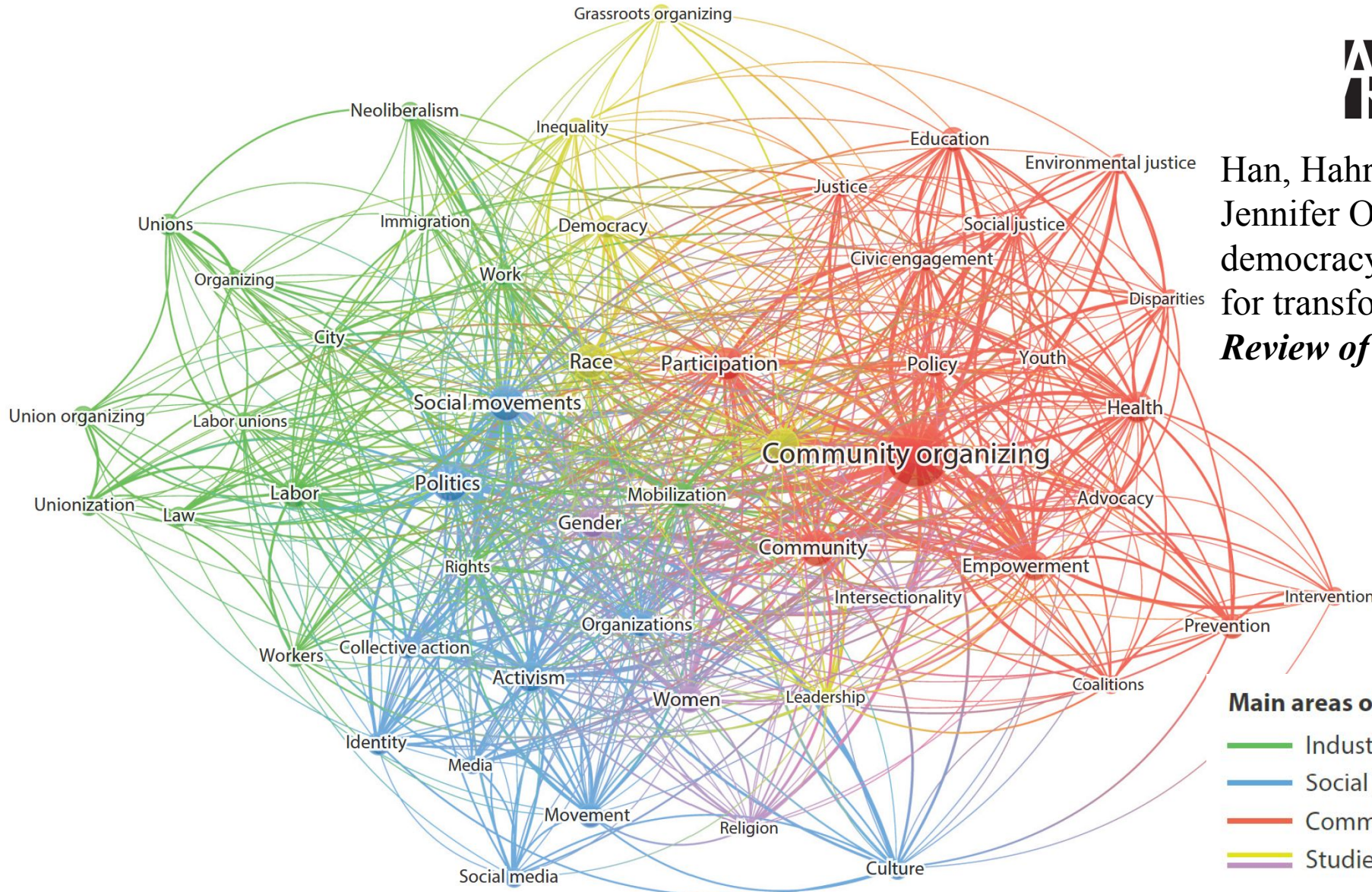


# Paper #1

## Organizing & Democracy



Han, Hahrie, Matthew Baggetta, and Jennifer Oser. 2024. Organizing and democracy: Understanding the possibilities for transformative collective action. *Annual Review of Political Science* 27: 245-62 [doi](#)



### Main areas of study

- Industrial relations and labor
- Social movement studies
- Community organizing and community empowerment
- Studies of gender, race, ethnicity, and inequality

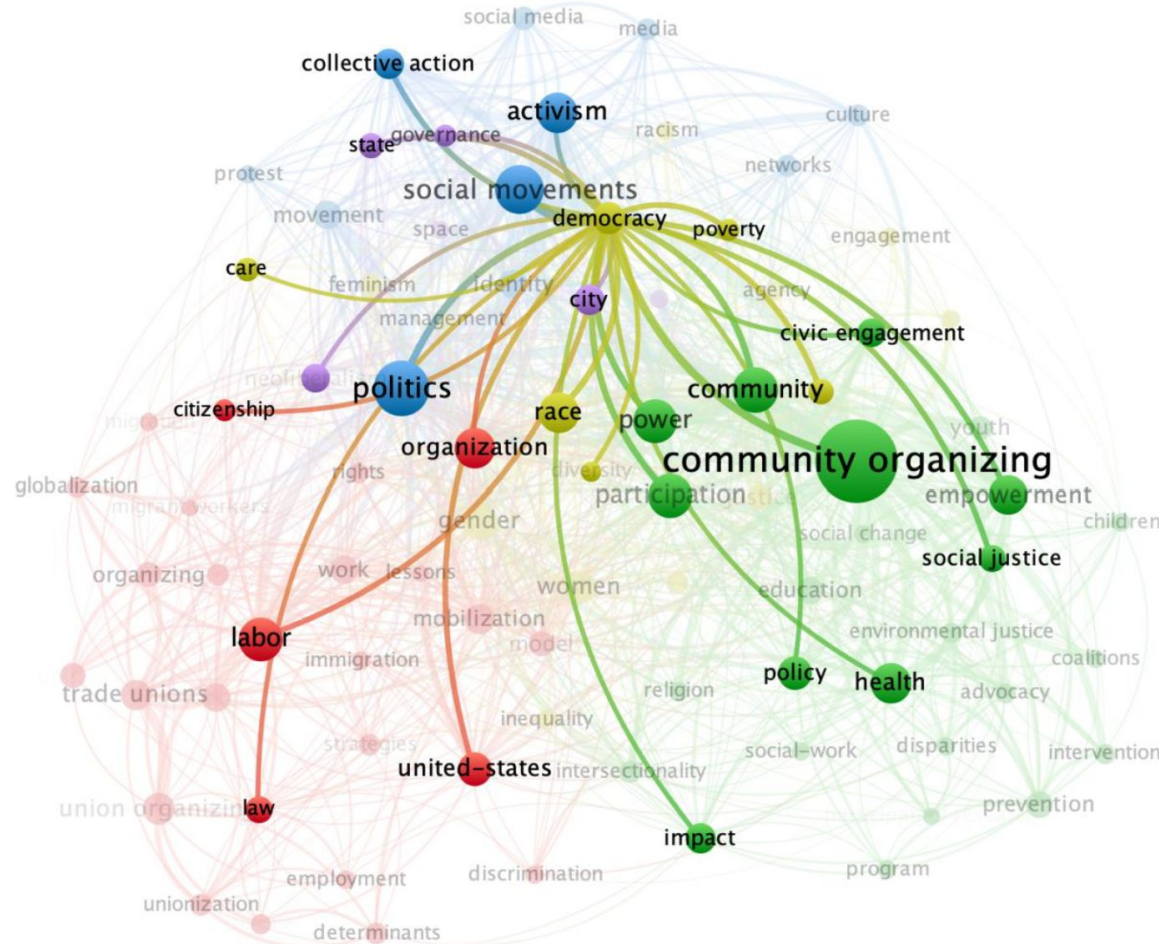


# Paper #2

## PS article, Literature Mapping



Figure 3. Democracy in the Terms Co-Occurrence Map.



Shoshan Aya, and Jennifer Oser. In press. Visualizing scientific landscapes: A powerful method for mapping research fields. *PS: Political Science & Politics* [doi](#), (APSA pre-print)

*Note:* This map, structurally identical to figure 2, visually highlights the keyword “democracy” and its relationship with other keywords.

# Paper #3, and related work

## *Latent class analysis (LCA) methodological articles*



Structural  
Equation  
Modeling  
A Multidisciplinary



Lyrvall, Johan, Zsuzsa Bakk, Jennifer Oser, and Roberto Di Mari. 2024. **Bias-adjusted three-step multilevel latent class modeling with covariates**. *Structural Equation Modeling: A Multidisciplinary Journal* 31 (4): 592-603. [doi](#)



Di Mari, Roberto, Johan Lyrvall, Zsuzsa Bakk, Jennifer Oser, and Jouni Kuha. (2024). **multilevLCA: Estimates and Plots Single-Level and Multilevel Latent Class Models**. CRAN, version 1.5.2, published 2024-10-12.  
<https://CRAN.R-project.org/package=multilevLCA>  
*9,134 downloads as of Nov. 17, 2024*



Lyrvall, Johan, Roberto Di Mari, Zsuzsa Bakk, Jennifer Oser, and Jouni Kuha. (2024). **multilevLCA: An R package for single-level and multilevel latent class analysis with covariates, v2**. arXiv. [doi](#)  
*R&R requesting light revisions received Nov 14, 2024 to a Q1 journal*

# Paper #4, and related journal symposium

*PS accepted co-edited symposium, "Data Harmonization"*



## *Accepted co-edited symposium proposal:*

Kołczyńska, Marta, Sylvia Kritzinger, and Jennifer Oser, eds. Accepted. **"Data harmonization in political science and related fields: Innovations, challenges, and visions for the future."** PS: Political Science & Politics. *[Proposal accepted October 10, 2024]*

## *PRD proposed article:*

Oser, Jennifer, and Barak Zur. "Strategizing About Data Harmonization Visions: The Case of Political Participation."

## *Additional proposed contributions (selected)*

Yue, Hu and Frederick Solt "Wrangling Pre-Harmonized Data"

Lindberg, Staffan I. et al. "DEMSCORE: Solving the Universal Harmonization of Data Across Any Unit of Analysis"



# Paper #5

## *Meanings of Protest*



- Pivot from original plan of longitudinal fieldwork in Israel and Spain starting October 8, 2023
- Collaboration with Prof. Carolina Plescia, ERC PI on “Meanings of Voting”
- Preliminary findings from first interviews in Israel
- Plan to organize a panel for the Association of Israel Studies conference (submission Jan 17), conference in Haifa July 7-9



# PRD pipeline

*Other papers and projects in progress (selected)*

(1) **“Becoming Architects of Political Change”** with Julia Schulte-Cloos & Hahrie Han

➤ Online lab experiment - visual conjoint - approximating social media activity to identify mechanisms for how democratic micropractices may strengthen pro-democratic norms

(2) **“Politicians Theories of Protest”** with Jamie Druckman, Lior Sheffer, Devorah Manekin, Tamar Mitts, Jae Yeon Kim, and Elizabeth McKenna

➤ Experimental survey design planned to be fielded in the US in December 2024 - comparing theories of protest of politicians, citizens, and civic leaders.

(3) **“Political Influencers on Social Media”** with Nir Grinberg and John Wagner

➤ Building on our prior work on “Who is Curating my Feed?” (Shamir, Oser & Grinberg 2024, IJPP, [link](#)) characterizes political influencers and their audiences using big data analysis

## **#2: Work-in-Progress**

Work-in-progress, under review



# Are the Politically Active Better Represented?

Jesper Lindqvist, Jennifer Oser, Ruth Dassonneville, Mikael Persson, and Anders Sundell

*Builds on Persson & Sundell (2024) BJPS “The Rich Have a Slight Edge”*

# In-class exercise!

(1) Who do you think is better represented - voters or non-voters?

- (a) Voters are better represented
- (b) Non-voters are better represented
- (c) No difference between voter & non-voters

(2) Who do you think is better represented - protesters or non-protesters?

- (a) Protesters are better represented
- (b) Non-protesters are better represented
- (c) No difference between protesters & non-protesters



# Are the Politically Active Better Represented?

- Dilemma: A democratic principle that all interests ought to be considered equally (Dahl, 1989, 86)
- “Unequal participation: Democracy's unresolved dilemma” – Lijphart (1997)
- Verba and Nie (1972, 2): this question as “perhaps most important of all” - and also “the most difficult to answer.”
- Competing arguments in the literature:
  - “Communication” argument: The politically active get more of the policies they want because of that they communicate their preferences to policy-makers
  - “Grievance” argument: Lack of responsiveness produces grievances, and results in political participation

# What's missing?

Systematic, generalizable, cross-national evidence showing whether the politically active are better represented overall.

# Research Questions

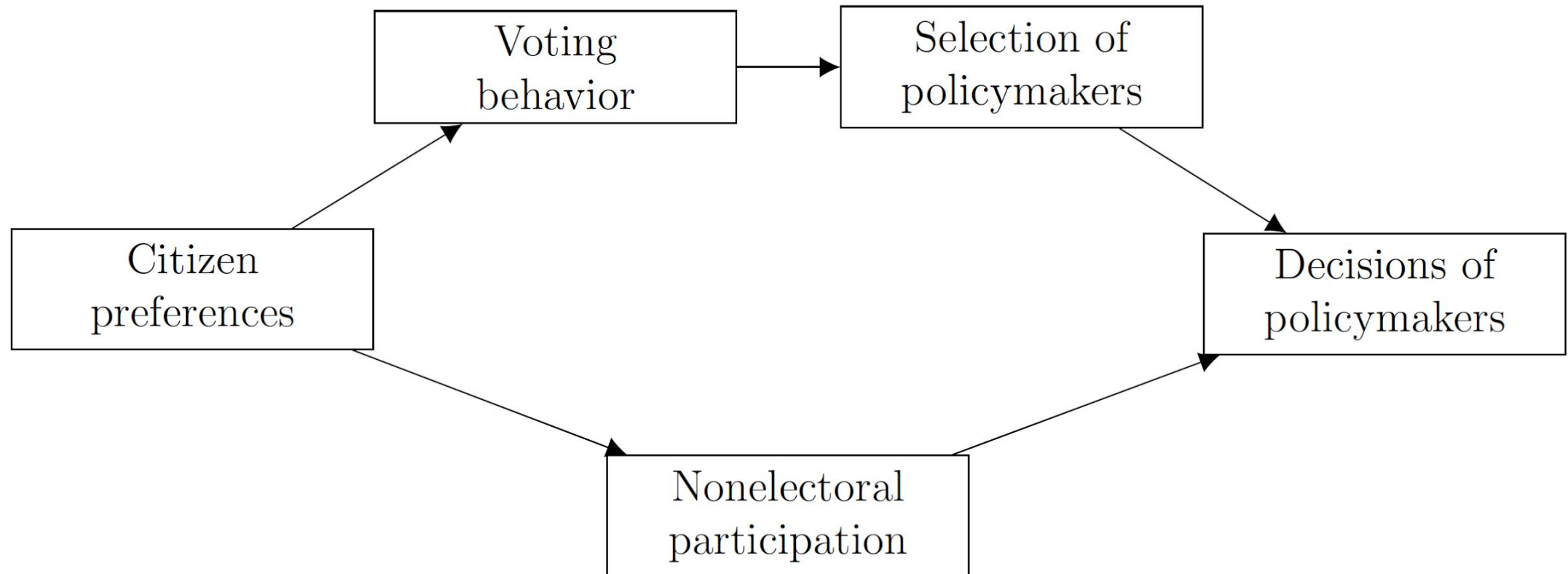
- (1) **Participation-Policy Connection:** Is opinion-policy congruence higher for the politically active?
- (2) **Alternate Causal Explanations:** Can alternative explanations account for a relationship between participation and opinion-policy congruence?

## Scholarly ambition:

- **Answer the question, “Are the Politically Active Better Represented” with the best available data and methods**
- **Agenda-setting for future work on causal mechanisms**

# Main Explanation

Figure 1: Electoral and nonelectoral channels of influence.





# Data and Methods

- 40 countries, 20 years, 270,000 respondents
- Individual-level data: ESS (round 1-5, 7, 8), ISSP (1996, 2004, 2014)
- Country-level policy implementation data (Persson & Sundell 2024)
  - Policy topics: civil liberties, economic issues, and immigration/ethnic minority
- Independent variables
  - *Voted*: Voted in the last election
  - *Demonstrated*: Have demonstrated in the last year (or last five years)
  - Robustness test with additional nonelectoral participation indicators
- Dependent variable
  - *Opinion-Policy Congruence*: Congruence between policy support and policy implementation (proportion, 0-1)
- OLS regression with country-survey-year fixed effects

# Data and Methods - Contribution

“This is, to our knowledge, the first study that analyzes cross-national data connecting opinions to subsequent policy implementation on multiple policy issues to assess whether those who are politically active have better opinion-policy congruence compared to non-participants”

(p. 2)

# Results: RQ1, are Participators Better Represented?

Table 2: The Positive Association Between Demonstrating and Opinion-Policy Congruence Remains When Controlling for Country-Survey-Year Fixed Effects.

	(1)	(2)	(3)	(4)
Voted	-0.015** (0.001)	-0.005 (0.001)	-0.012** (0.001)	0.002 (0.001)
Demonstrated	0.031** (0.002)	0.027** (0.002)	0.013** (0.002)	0.024** (0.001)
Intercept	0.524** (0.001)	0.615** (0.003)	0.575** (0.001)	0.674** (0.003)
Country FE		✓		
Year FE			✓	
Country-Survey-Year FE				✓
N	273,191	273,191	273,191	273,191
R <sup>2</sup>	0.002	0.109	0.125	0.391

Note: \*p < .05; \*\*p < .01. Observations weighted by the number of policy questions answered by each respondent.

# Results: Alternative Explanation 1, Socio-Economic Status

Table 3: Socio-Economic Characteristics Explain Part of the Difference Between Demonstrators and Non-Demonstrators, but Does Not Fully Account for the Better Representation of Demonstrators.

	(1)	(2)	(3)	(4)
Voted	0.002* (0.001)	0.001 (0.001)	0.001 (0.001)	0.004* (0.001)
Demonstrated	0.024** (0.001)	0.024** (0.002)	0.015** (0.002)	0.015** (0.002)
Income		0.034** (0.002)		0.013** (0.002)
Tertiary education			0.032** (0.001)	0.034** (0.001)
Woman				-0.005** (0.001)
Age < 30				0.005** (0.002)
Age >= 60				-0.012** (0.001)
Rural				-0.008** (0.001)
Country-Survey-Year FE	✓	✓	✓	✓
N	273,191	200,602	200,340	147,108
R <sup>2</sup>	0.391	0.401	0.384	0.390

Note: \*p < .05; \*\*p < .01. Observations weighted by the number of policy questions answered by each respondent. When we re-estimate Model 1 with the same sample as in Model 4, the coefficient on Voted is 0.004\*\* and on Demonstrated 0.022\*\*, meaning that the control variables in Model 4 account for about a third of the coefficient for Demonstrated.

# Results: Alternative Explanation 2, Political Attitudes

Table 4: Political Attitudes Do Not Explain the Difference Between Demonstrators and Non-Demonstrators.

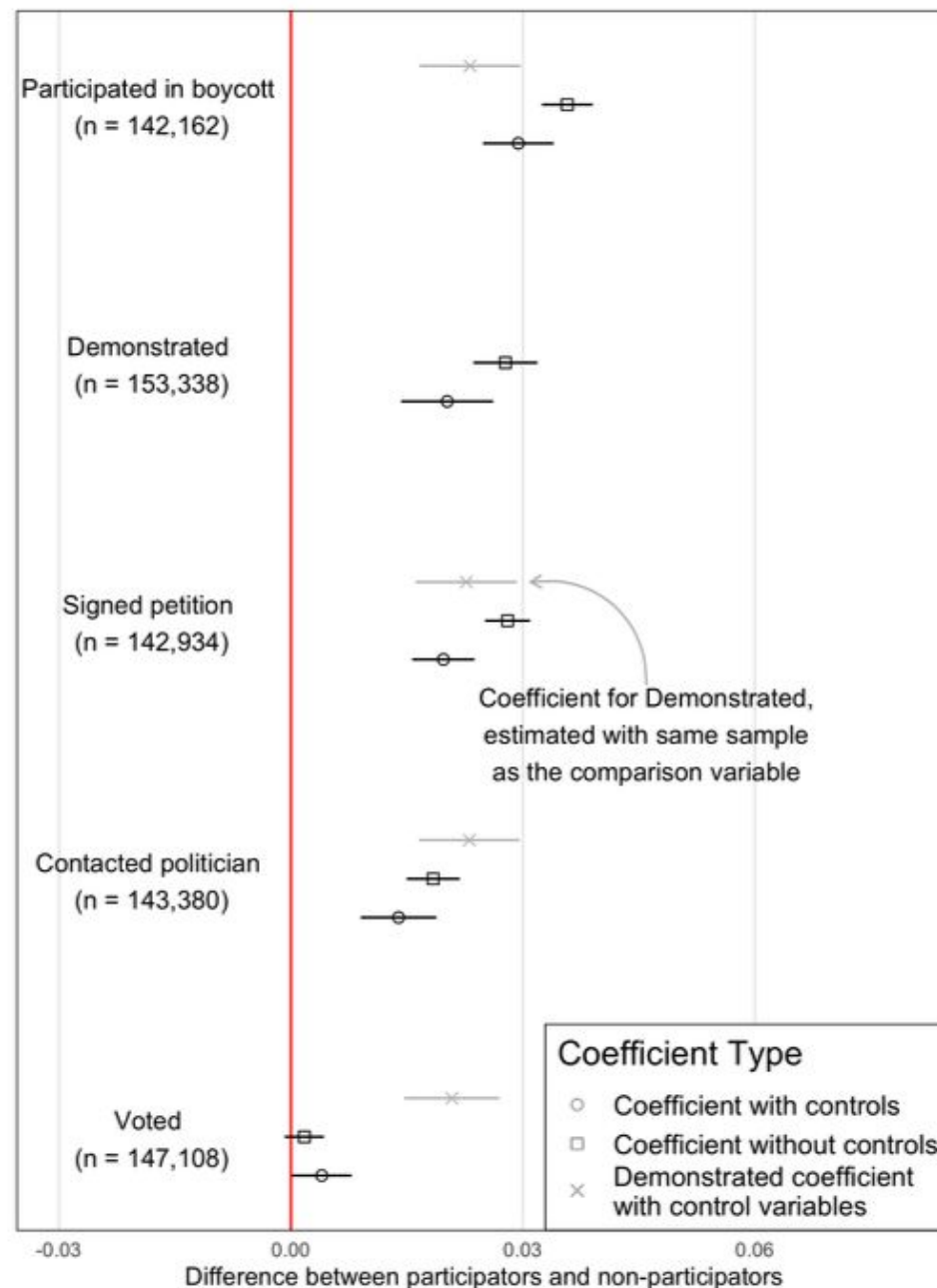
	(1)	(2)	(3)	(4)	(5)
Voted	0.001 (0.001)	0.003* (0.001)	0.003* (0.002)	-0.002 (0.002)	-0.002 (0.003)
Demonstrated	0.013** (0.002)	0.015** (0.002)	0.015** (0.002)	0.017** (0.003)	0.015** (0.003)
Political interest	0.014** (0.001)				0.009** (0.002)
Political trust		0.007** (0.001)			-0.004 (0.002)
Satisfied with democracy			0.009** (0.001)		0.001 (0.002)
Political efficacy				0.007** (0.002)	0.006** (0.003)
Country-Survey-Year FE	✓	✓	✓	✓	✓
Socio-economic control variables	✓	✓	✓	✓	✓
N	146,351	144,412	136,379	50,524	45,642
R <sup>2</sup>	0.391	0.389	0.392	0.451	0.447

Note: \*p < .05; \*\*p < .01. Observations weighted by the number of policy questions answered by each respondent. Socio-economic control variables include income, tertiary education, woman, age, and rural. When we re-estimate Model 1-4 with the same sample (number of observations) as in Model 5, the coefficients for Voted are (from Model 1 to Model 4) -0.002, -0.0004, -0.001, and -0.001. For Demonstrated, the coefficients are 0.015\*\*, 0.016\*\*, 0.016\*\*, and 0.016\*\*.



# Robustness Tests – Additional Nonelectoral Participation

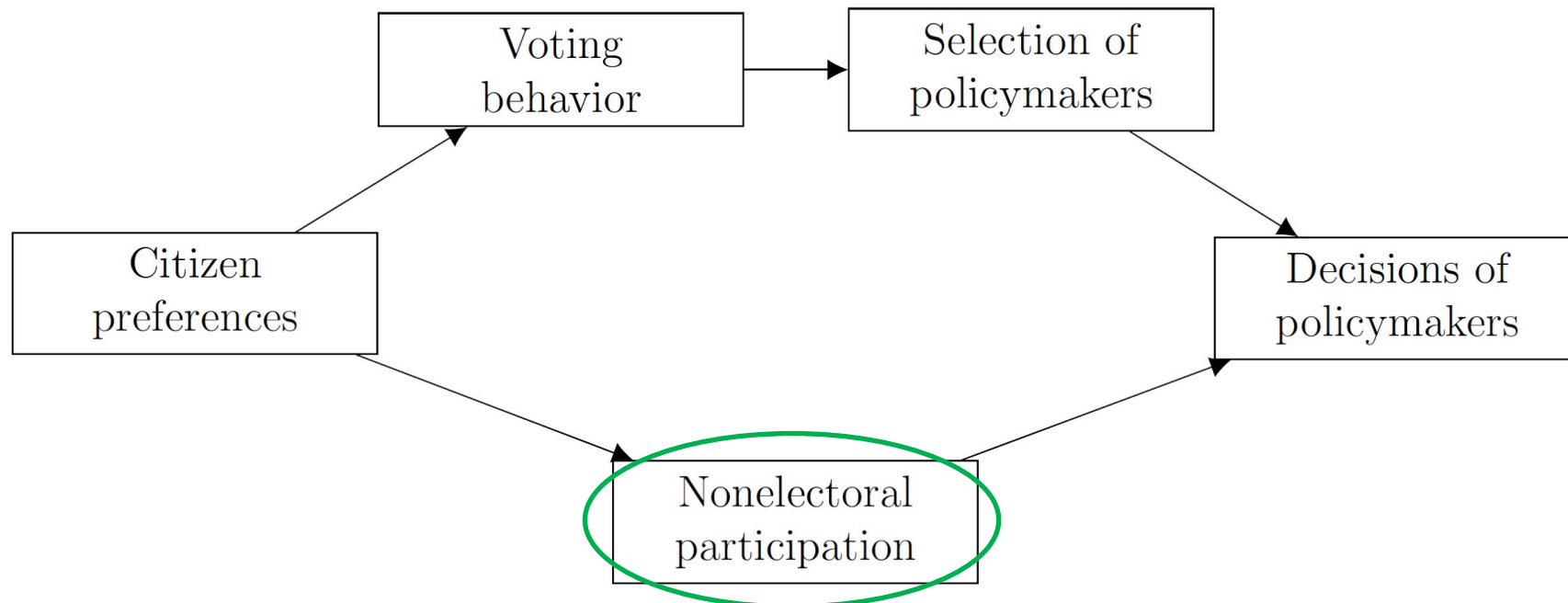
Figure 6: Association Between Different Forms of Political Participation and Opinion-Policy Congruence.



# Research Questions & Answers

- (1) **Participation-Policy Connection:** Is opinion-policy congruence higher for the politically active? Yes for demonstrators, not for voters
- (2) **Alternate Causal Explanations:** Can alternative explanations account for a relationship between participation and opinion-policy congruence? Partially

Figure 1: Electoral and nonelectoral channels of influence.



## **#3: Invitations!**

# Upcoming Events

<https://www.pr-d-erc.eu/news>

## 1. ERC project research talks - “News”

- Tel Aviv University political science department seminar, December 2, 14:15-16:00, ERC project overview and experimental design discussion
- Hebrew University Eran Halperin’s lab, Dec 10, 14:30-16:00, “Social Mobilization”

## 2. Israel Political Science Association Conference - February 12 at BGU, led by Prof. Gal Ariely

## 3. Young Academy support for ERC submissions and PI team leadership in humanities and social sciences

## 4. Webinar series

# ERC Webinar Series Videos, 2023-2024

<https://www.prd-erc.eu/events>



January 17

**Prof. Michael Delli Carpini** | University of Pennsylvania  
*"Digital Media and Democratic Futures"*



February 21

**Prof. Noam Lupu** | Vanderbilt University & the American Academy of Berlin  
*"Poll Workers and the Effects of Political Participation"*



March 6

**Prof. Theda Skocpol** | Harvard University  
*"Citizen Organizing and Partisan Polarization"*



22 May 2024

**Prof. André Blais** | University of Montreal &  
Chair in Electoral Studies

*"Participation and Representation"*



19 June 2024

**Prof. Rachel Gibson** | University of Manchester &  
PI of ERC Advanced Grant

*"Online Political Influencers"*



10 July 2024

**Prof. Hahrie Han** | Johns Hopkins University &  
Director of the SNF Agora Institute

*"Organizing and Democracy"*



# Invitation to Webinars 2024-2025, Semester A

<https://www.prd-erc.eu/events>



December 4, 2024

Prof. Anne Rasmussen | King's College London

*"Costs of Running and Engaging in Politics"*



January 8, 2025

Prof. Ruth Dassonneville | University of Montréal

*"Gender Gap in Voter Turnout"*



January 22, 2025

Prof. Yotam Margalit | Tel Aviv University

*"Political Consequences of Green Policies"*

# Sneak Preview to Webinars 2024-2025, Semester B

<https://www.prd-erc.eu/events>



**Carolina Plescia, University of Vienna**

*ERC PI Starting, DeVOTE*

*"The Meanings of Voting for Citizens" (OUP, in press)*



**Shiro Kiruwaki, Yale University**

**Stephen Ansolabehere, Harvard University**

*"Congressional Representation" (book project)*



**Christopher Wlezien, University of Texas**

*American Academy of Arts and Sciences Member*

*"Democratic Policy Representation is (Really) Hard"*

# Participation & Representation in the Digital Age (PRD)

Jennifer Oser | Ben-Gurion University, Israel



Ben-Gurion University of the Negev  
Rector's Lecture Series  
November 26, 2024